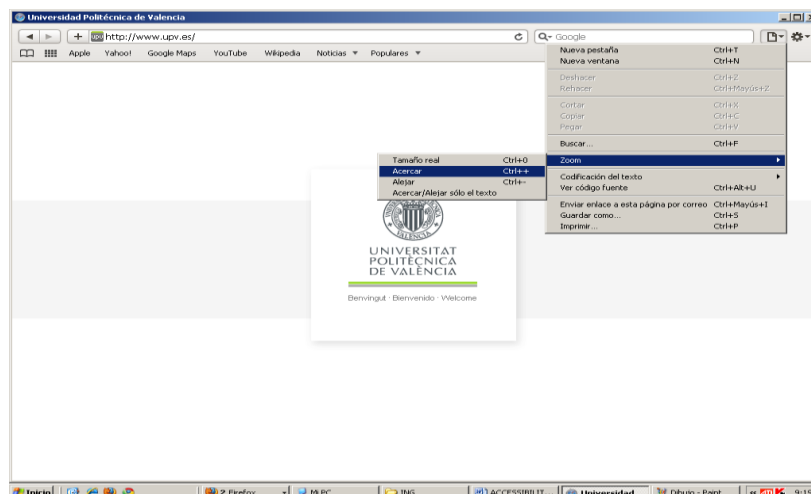


## ACCESS GUIDE FOR PEOPLE WITH VISUAL WEAKNESS SAFARI 5.0.3

If you are blind or have trouble seeing what appears on the screen you can quickly specify the type and font size. These customizations can be useful if you have difficulty seeing, if you need that the sources are greater.

### 1. To increase the entire website, including images

Select Page menu> Zoom. (The menu page is near the top right corner of the Safari window and is similar to a page with one corner folded down).



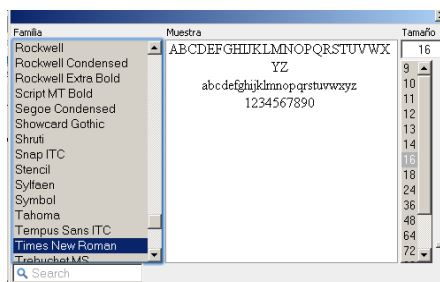
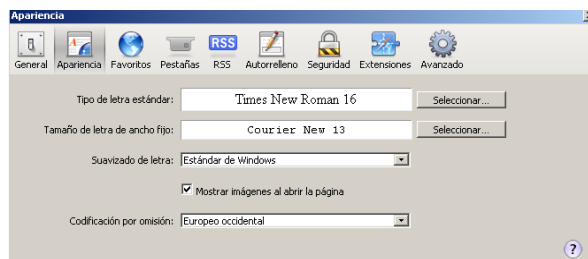
### 2. To increase text only

Select Page menu> Zoom In / Zoom text only. (The menu page is near the top right corner of the Safari window and is similar to a page with one corner folded down).

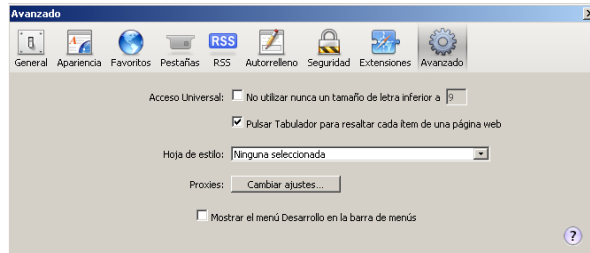


### 3. To increase the size of small fonts in web pages

- Select Actions menu> Preferences and click Advanced. (The action menu is near the top right corner of the Safari window and is similar to a gear).



- Select "Never use a font size below" and choose a font size from the dropdown menu.



You can not get bigger all the small fonts used in web pages. Small sources of images, for example, are not affected by this setting.

On some pages, the various content elements will be displaced if you select this option.