
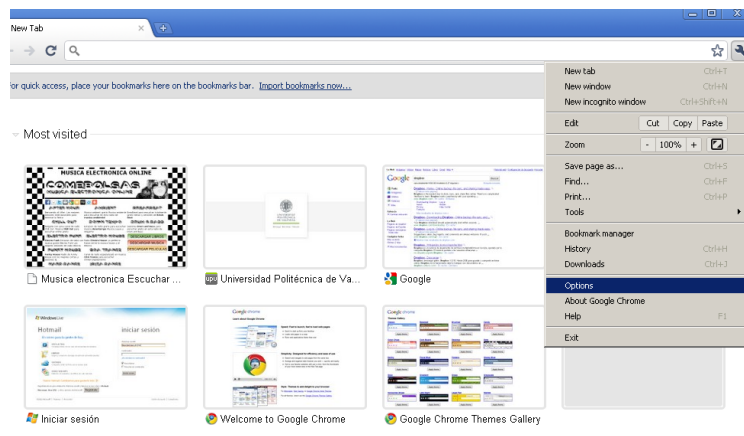


ACCESS GUIDE FOR PEOPLE WITH VISUAL WEAKNESS IN GOOGLE CHROME 8.0.552.224

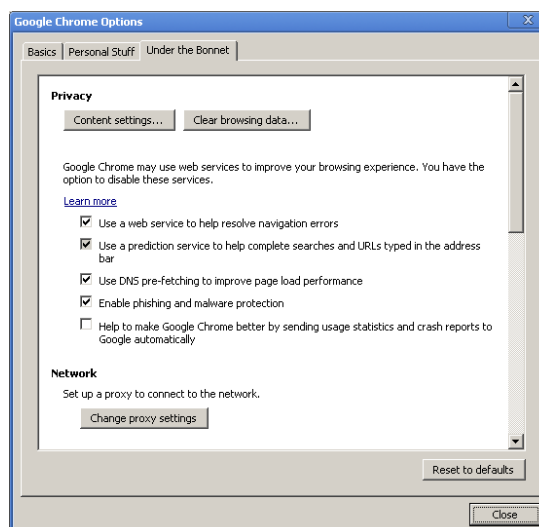
If you are blind or have trouble seeing what appears on the screen you can quickly specify the type and font size and language. These customizations can be useful if you have impaired vision and needs are greater sources.

Once you have logged into Google Chrome click on the wrench  and options within this mark.



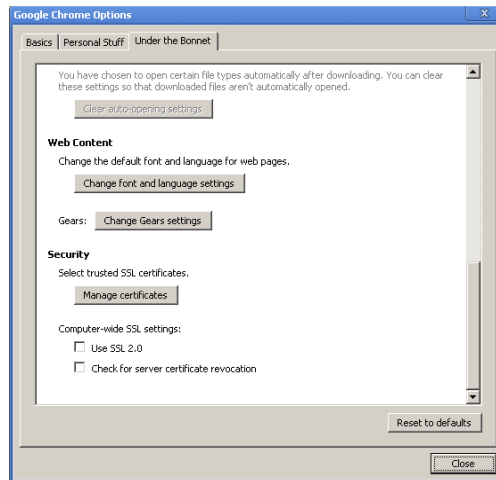
Picture 1

As seen in the figure below, we have three tabs within the options. Choose “Under the Bonnet”



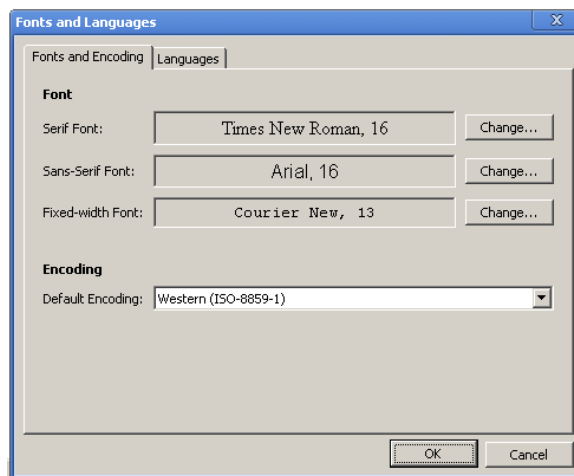
Picture 2

Within this we scroll down with the Web Content and click Change font and language settings.



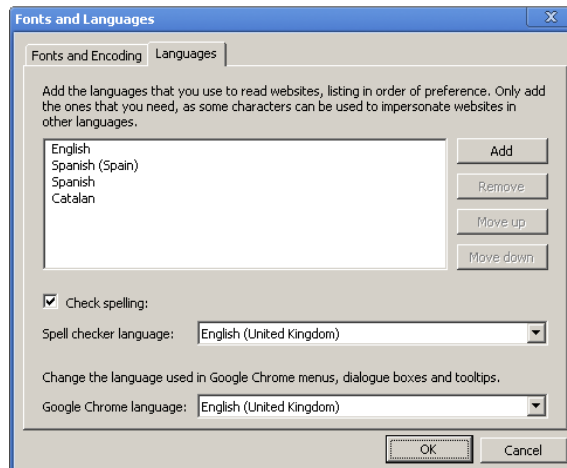
Picture 3

In the Font tab and coding can change the font type and font size.



Picture 4

In the Languages tab you can configure which language we want to see page.



Picture 5

If only we want to make a zoom of the page we just press Ctrl + + and Ctrl - to decrease. To return to your original, press Ctrl +0.