

ACCESSIBILITY GUIDE FOR PEOPLE WITH MOTOR WEAKNESS FOR Linux Ubuntu 10.10 (Maverick Meerkat)

1. How to set the options for users who have problems using their keyboard or mouse.

If you have problems using their keyboard or mouse, you can set easily the options you need thanks to Assistive Technologies.

	Using the mouse	Using the keyboard
1	<p>You can use different programs to write with the mouse. We recommend two of them:</p> <ul style="list-style-type: none">• OnBoard, is a simple keyboard in the screen. It is already installed in Ubuntu, picture 1.• Dasher, is an interesting program for users who will use it to write very often, picture 2. By default it is not installed, to install the program:<ul style="list-style-type: none">- System, administration, Synaptic package manager.- After writing your superuser password, write in the square of quick search "Dasher".- Some files will come up. If the box on the left appears in green it means that it is already installed, so it is not necessary to follow these steps.--	<p>You can use different programs to write with the mouse. We recommend two of them:</p> <ul style="list-style-type: none">• OnBoard, is a simple keyboard in the screen. It is already installed in Ubuntu, picture 1.• Dasher, is an interesting program for users who will use it to write very often, picture 2. By default it is not installed, to install the program:<ul style="list-style-type: none">- Press Alt + F2, and write gnome-terminal and press enter.- Write "sudo apt-get install dasher" and press enter.- You will be asked for your superuser password, write it and press enter.

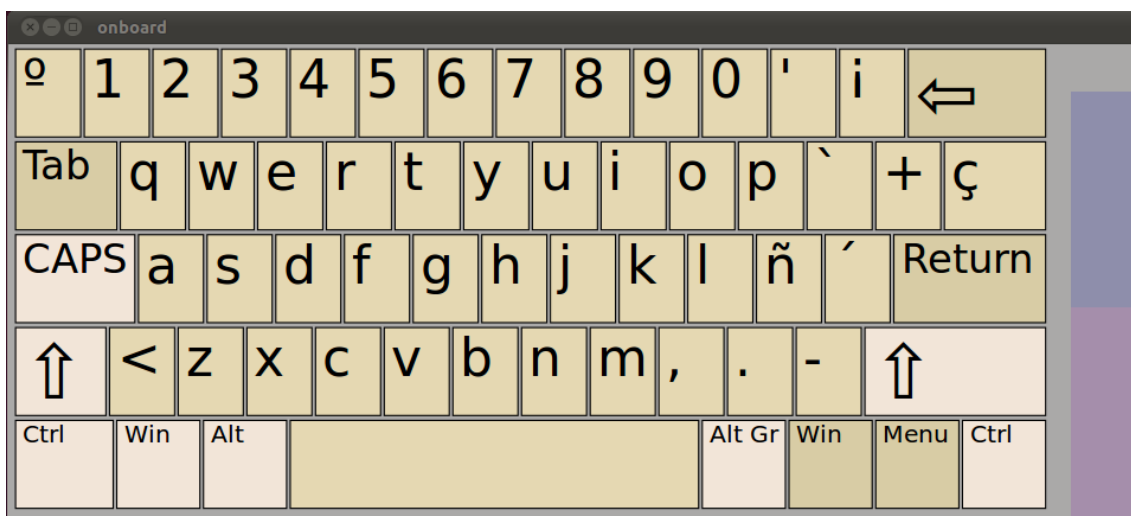
	Using the mouse	Using the keyboard
	<ul style="list-style-type: none">- If not, press double click on Dasher, press in the box to mark- and then apply. When this process is finished, the program will be installed.- You can implement the application by writing "dasher" on your console or in the menu that it is detailed below.	<ul style="list-style-type: none">- You will be asked if you want to use a certain space in the disk. Press S and press Enter.- You can run the application with Alt+F2 and writing "dasher".
2	<p>You can configure the accessibility menu;</p> <ul style="list-style-type: none">• Press click with the right button of your menu Applications Places System and press in Edit menus.• In the option universal access, mark all the boxes of the applications that you will use (in this case OnBoard and/or Dasher).• To execute OnBoard or Dasher, go to Applications , universal access, and OnBoard or Dasher. <p>You will also find in this menu the option "OnBoard settings", which you can configure in the most suitable way for you.</p>	

Dasher application can be a little confusing at first, but it can be really valuable and it can be reached an acceptable number of letters per minute with a short period of training. You can set it in several different ways, but every configuration follows the next rules:

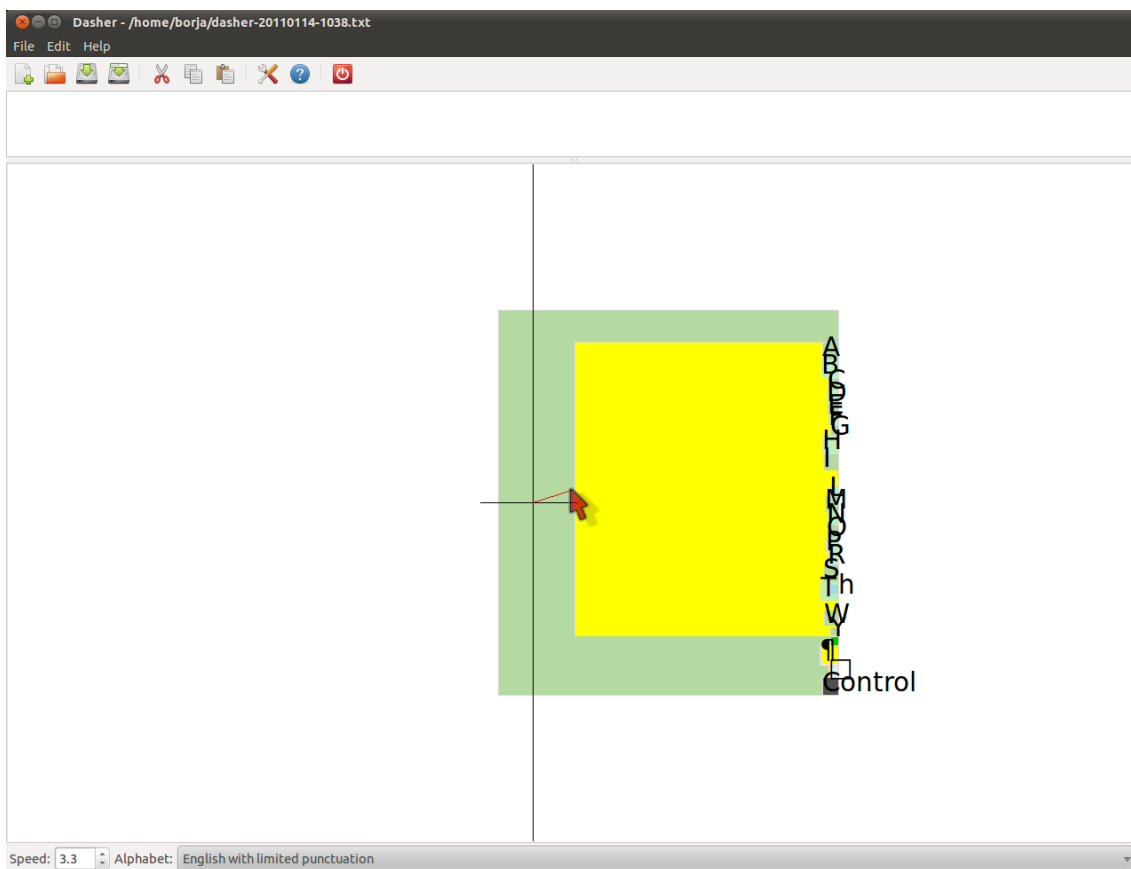
- An “ABC” appears on the right of the screen, the letters with the most possibilities to be select are increased. The order of this ABC and the symbols is:
 - Above the letters we can find the accents, in an **orange** box.
 - Just below the small letters, and a little bit above of the capital letters in an **orange** box.
 - After that, in a **red** box, you can find the numbers and after that all the writing symbols in a **green** box.
 - If we look above that, we have an empty box which symbolizes the space and the symbol of the Intro.
 - To conclude, we can find the box “control” in a navy **grey**, with which we can execute some keyboard shortcuts.
- If we want to write, we must go to the symbol or letter we want and it will be written. Inside, a new symbol alphabet will be opened, with the same order tan the last one, but with the corresponding sizes to highlight.
- The way of using the program is using the mouse, but it can also be configured to use a joystick, a key of the keyboard, several keys or a webcam. It can be also configure the speed of the movement, the language and more options. To configure, go to Edit and choose Preferences (Dasher window).

		Using the keyboard
3	On the System menu: <ul style="list-style-type: none">• Choose Preferences.• Press Assistive Technologies picture 3.	<ul style="list-style-type: none">• Press alt + F2 and write gnome-at-properties• Press Enter picture 3.• Once you reach Preferred Applications press space.

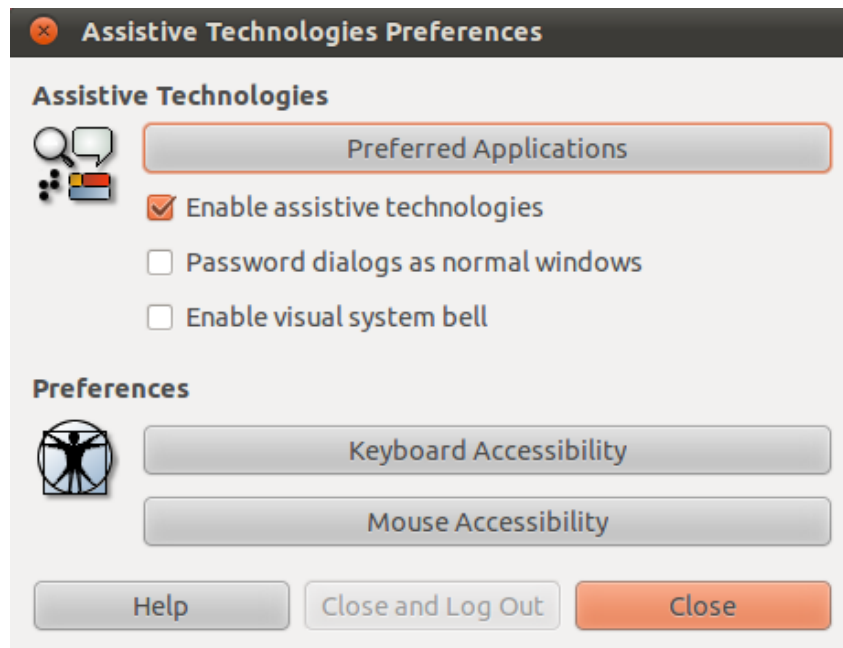
	Using the mouse	Using the keyboard
4	<ul style="list-style-type: none">● Choose Preferred Applications:<ul style="list-style-type: none">○ Press the option of mobility picture 4.○ Choose the application you prefer (OnBoard o Dasher), and mark it if you want it to be executed at the start.○ Press close.● Press Keyboard Accessibility.<ul style="list-style-type: none">○ Configure it in the best way that you think it is adapted to you (be aware that there are more options apart from accessibility and they could be useful for you, picture 5.○ Close the window.● Go to Mouse Accessibility.<ul style="list-style-type: none">○ Configure the options of both indexes in your best convenience picture 6.	<ul style="list-style-type: none">○ Go along the options with the key Tab, and press space when you are on the mobility menu picture 4.○ Choose the application you prefer (OnBoard o Dasher), and mark it to be executed at the start, if you want.○ Close he window.● Press Tab until you reach the key Keyboard Accessibility and press space.<ul style="list-style-type: none">○ Configure it in the best way that you think it is adapted to you (be aware that there are more options apart from accessibility and they could be useful for you), figure 5. Remember that you have to combine the keys Tab and the arrows to move among the options.○ Close he window.● When you are on the option Mouse Accessibility, press space picture 6.<ul style="list-style-type: none">○ Configure the options of both indexes in your best convenience.



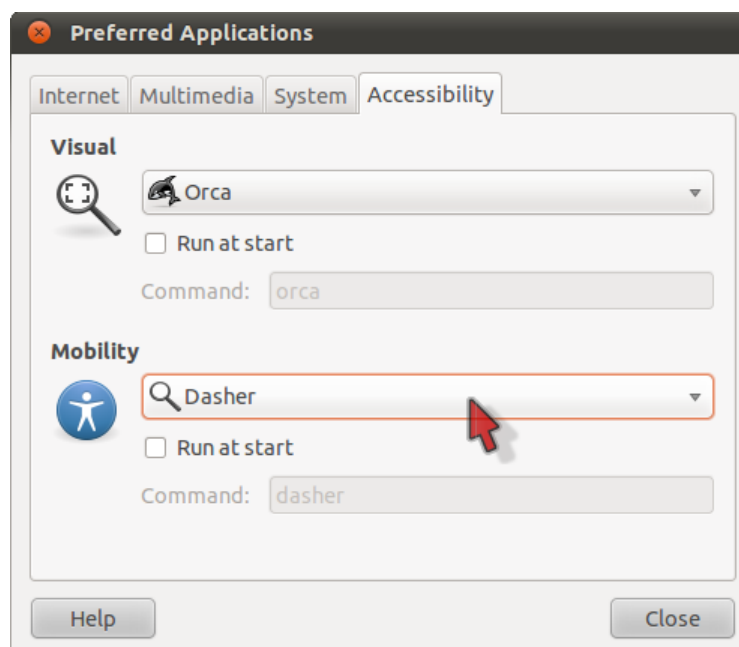
-Picture 1-



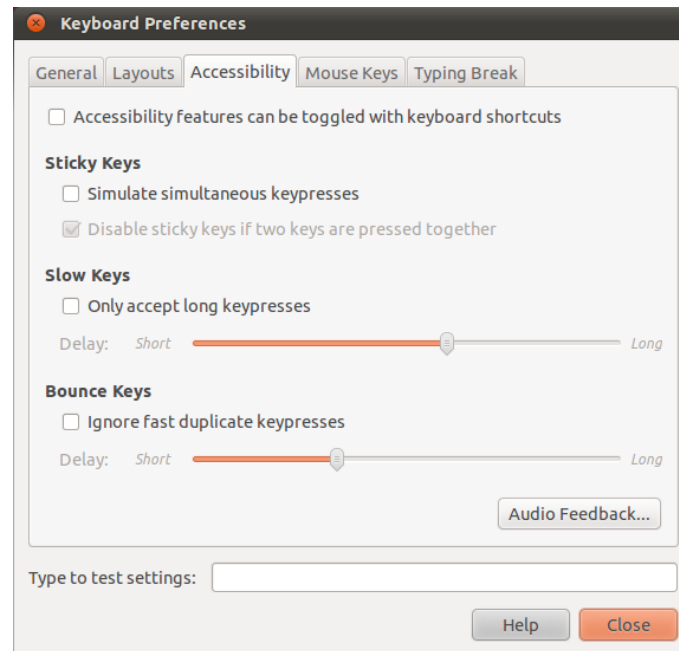
-Picture 2-



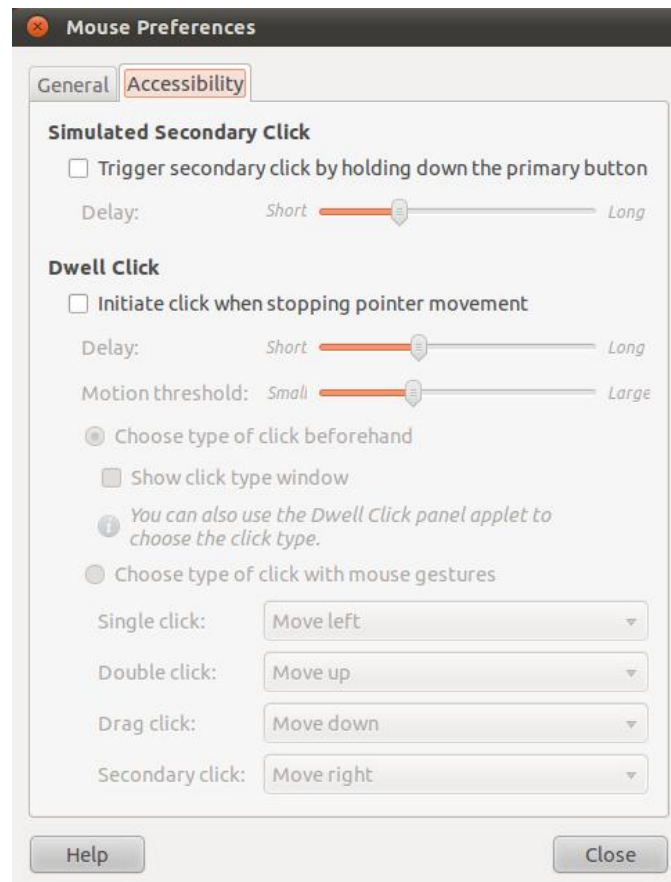
-Picture 3-



-Picture 4-



-Picture 5-



-Picture 6-