



EL ZAGUÁN
ESPACIO ARTISTICO

GRÁFICA RESTRUCTURAL
COMUNICACIÓN VISUAL









X.I. Ximo Mico's Drawing
2019, 2020
Mixed media
Drawing on paper
The drawing is made with black ink and colored markers on a white background. It consists of four panels, each containing a different colored circle and a black circle, with small black dots and lines scattered around them.



DIÁSPORAS

Tiene.
Trascurren las cinco y
escupe la tabla escritora.
En ese océano de enredos
raúligen impías,
miles, miradas calvas.

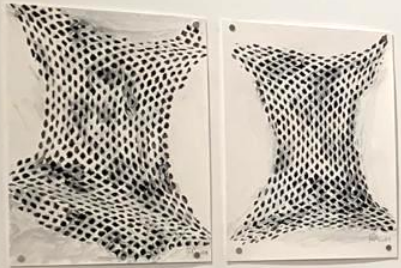
Mares.
Amores contra basaltos
empetrados
en sus abrazos.

Día roto.
Químicos cánticos
de envaseada hirviente.

Se abriga la plata
de aristas mullidas
que ocultarlogras de inagnio,
noches de emillas.

Vestida de luto
se esconde mojada
con negros de lujo
y silencio de blanca.

X.V. Ximo Mico
2019, 2020
Mixed media



Small white label with text, likely describing the artwork.



Small white label with text, likely describing the artwork.



Small white label with text, likely describing the artwork.



Small white label with text, likely describing the artwork.



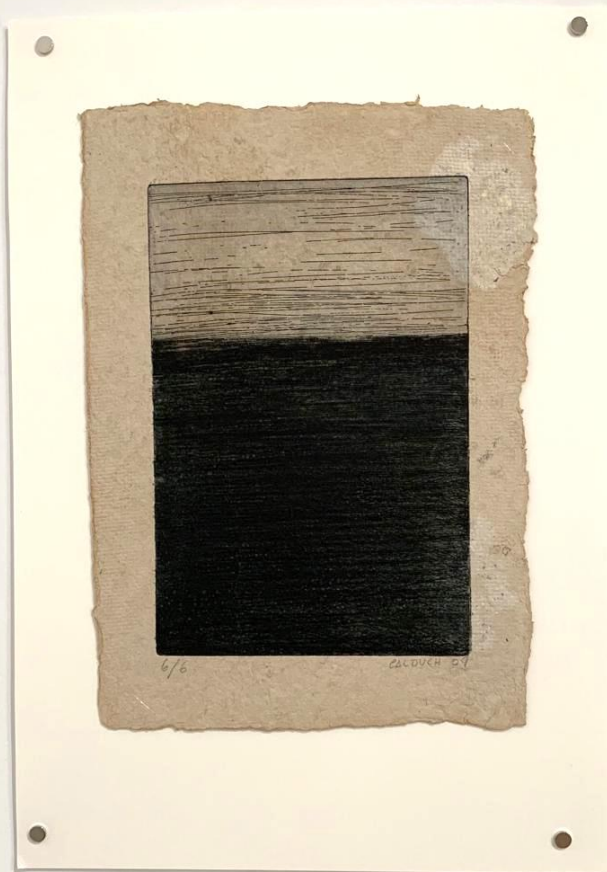
Small white label with text, likely describing the artwork.





Small white label with illegible text, positioned below the first photograph.





XLI. Rafael Calduch
Aut. 2014
Finito enca sobre papel colado
Cadastral sobre papel colado. Para participacion a un
evento de Enrique con manipulacion personal
de color y de linea.



Architectural drawing or map showing a section of a building or site plan.



Architectural drawing or map showing a complex layout of structures.



Photograph or drawing showing a perspective view of a building's interior or exterior structure.



Photograph or drawing showing a perspective view of a building's interior or exterior structure.



Photograph or drawing showing a perspective view of a building's interior or exterior structure.



Photograph or drawing showing a perspective view of a building's interior or exterior structure.



Photograph or drawing showing a perspective view of a building's interior or exterior structure.



Building facade



3D model



Perspective views



Technical drawing



Technical drawing



Architectural drawing of a building facade.



Architectural drawing of a geometric structure.



Architectural drawings of a geometric structure.



XXX. José Antonio Pizarro
04/04/2014
Materiales: aluminio, acero, hierro
Medidas: 100x100x100 cm
Este trabajo es una obra de arte conceptual y de gran complejidad.
El artista.



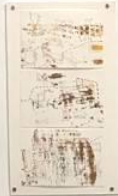
XXX. José Mª Pizarro
El presente es un trabajo conceptual y de gran complejidad.
El artista. Este es un trabajo de gran complejidad y de gran importancia.
El artista.



XX. María Lina
Este trabajo es una obra de arte conceptual y de gran complejidad.
El artista. Este es un trabajo de gran complejidad y de gran importancia.
El artista.



Small rectangular label with text, positioned below the first artwork.



Small rectangular label with text, positioned below the third artwork.



Small rectangular label with text, positioned below the fourth artwork.



Small rectangular label with text, positioned below the sixth artwork.



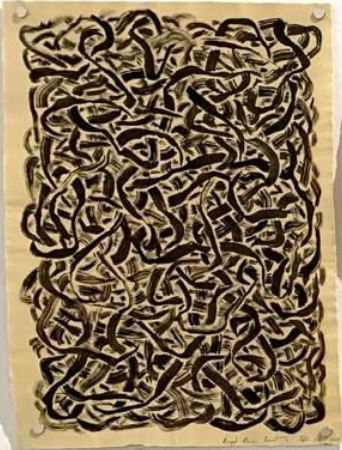
Small rectangular label with text, positioned below the seventh artwork.



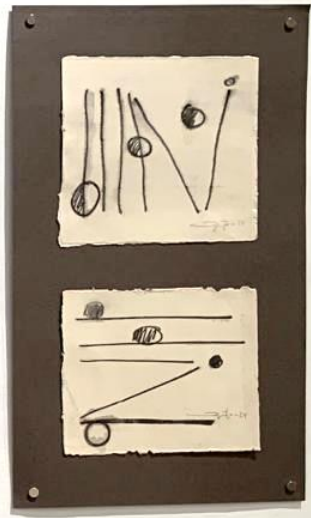
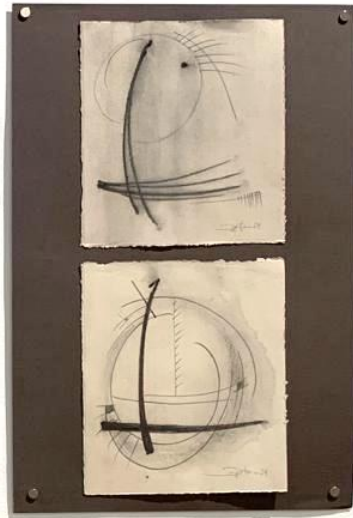
Small rectangular label with text, positioned below the eighth artwork.







19. **Joseph Beuys**
Autumn, November 1967
Black ink on paper, 10 x 10 cm
Beuys's work is characterized by its dense, intricate patterns and its use of natural materials. This piece is a prime example of his 'drawing' technique, where he uses black ink to create complex, organic forms on a light-colored background.



20. **Joseph Beuys**
Autumn, November 1967
Black ink on paper, 10 x 10 cm
Beuys's work is characterized by its dense, intricate patterns and its use of natural materials. This piece is a prime example of his 'drawing' technique, where he uses black ink to create complex, organic forms on a light-colored background.





10. Elise Park
Elise Park, 2015
This artwork is a study in texture and color, featuring a dense, layered pattern of brown and gold. The artist uses a combination of fine lines and larger, more expressive strokes to create a rich, textured surface. The overall effect is one of depth and complexity, with the various shades of brown and gold blending together to form a harmonious, yet intricate composition.



1010. Pappas Art
Pappas Art, 2015
This artwork is a study in texture and color, featuring a dense, layered pattern of black and white. The artist uses a combination of fine lines and larger, more expressive strokes to create a rich, textured surface. The overall effect is one of depth and complexity, with the various shades of black and white blending together to form a harmonious, yet intricate composition.



Small white informational card placed below the artwork.



Small white informational card placed below the artwork.



Small white informational card placed below the artwork.



Small white informational card placed below the artwork.





P. MONDRIAN
ABSTRACT DRAWING
Four abstract drawings by Piet Mondrian, arranged in a 2x2 grid. Each drawing is on a rectangular piece of paper with a thin black border. The drawings feature bold black lines, some red and yellow accents, and gestural, expressive forms. The top-left drawing has a prominent red vertical line and a black horizontal line. The top-right drawing features a large, sweeping black curve. The bottom-left drawing is more complex with multiple overlapping lines. The bottom-right drawing shows a white, rounded shape within a black frame.



Informational text block for the artworks on the left wall.



Informational text block for the grid artwork.



Informational text block for the horizontal bands artwork.



Informational text block for the small grid artwork.



Informational text block for the group of four artworks.



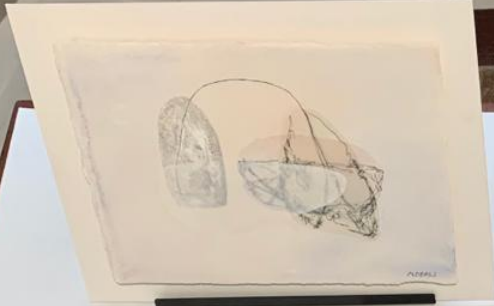
Informational text block for the dense pattern artwork.



Informational text block for the geometric pattern artwork.







XXI. Cristina Balboa
 [Illegible text describing the artwork]



XXII. Juan Canales
 [Illegible text describing the artwork]