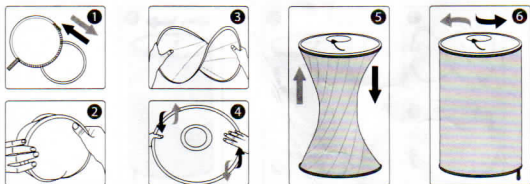


# Thank you for purchasing Aputure® Space Light.

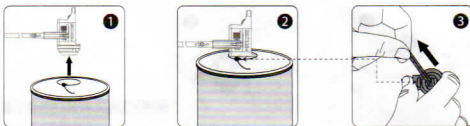
Aputure's Space Light is designed for the Light • Storm 120 and 300 series.

## Open → (and Take in →)



\* Bend the space light and take in it as above pictures show transpose.

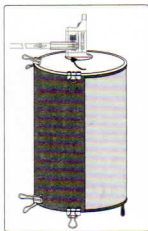
## Install



\* Release or tight space light through spring fastener.

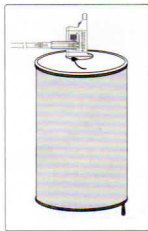
## Two Usage Ways

### 1. With the side reflector



\* 3pcs clamps up and down.

### 2. Without the side reflector



## Removing the Bottom

