

Modelos estadísticos multivariantes en Biología de Sistemas

2 min



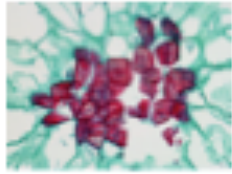
Proyecto de tesis

Biología de Sistemas

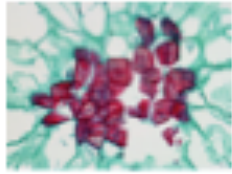


**Biología de
Sistemas**



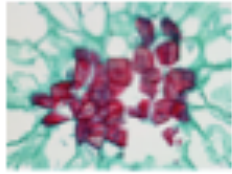


Células: levaduras, bacterias...



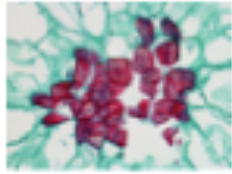
Células: leveduras, bacterias...





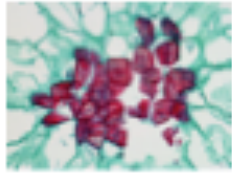
Células: leveduras, bacterias...





Células: leveduras, bacterias...

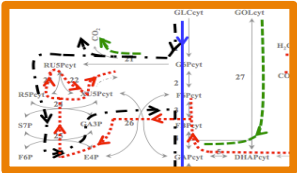
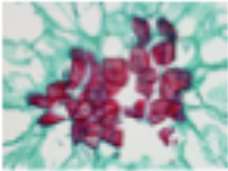




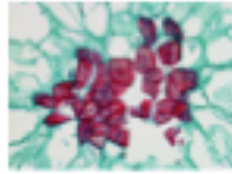
Células: leveduras, bacterias...



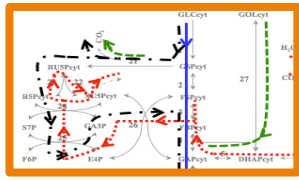
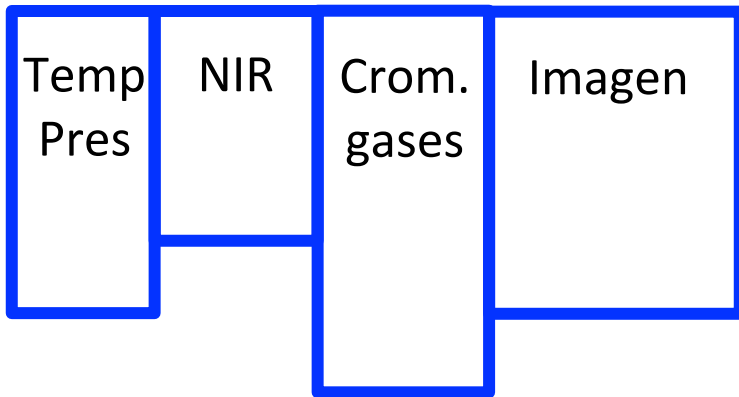
Metabolismo y regulación



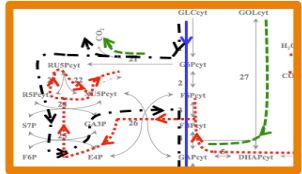
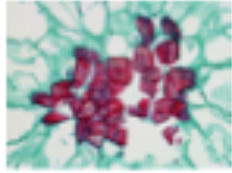
Metabolismo
y regulación



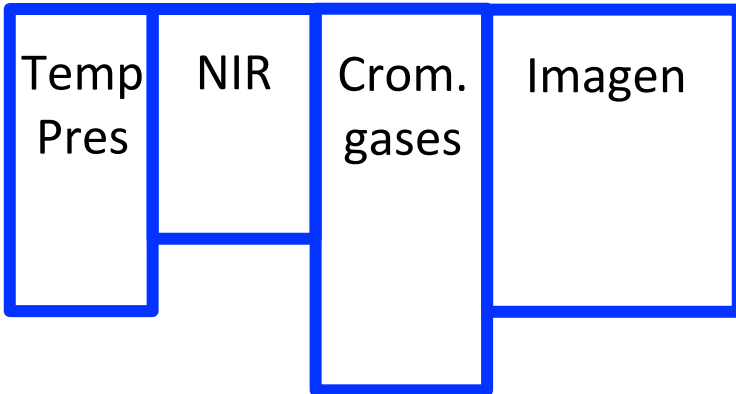
Datos



Metabolismo
y regulación

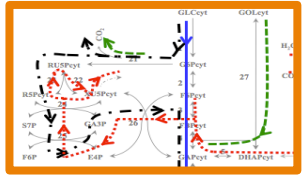
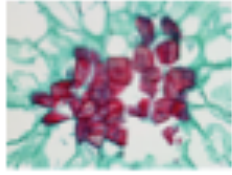


Datos

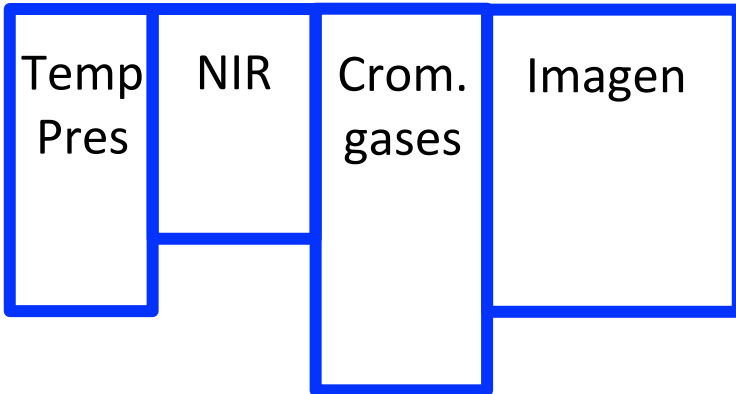


biomasa,
color,
acidez...

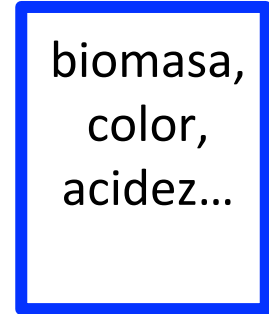
Metabolismo
y regulación



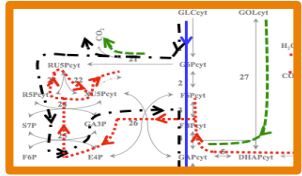
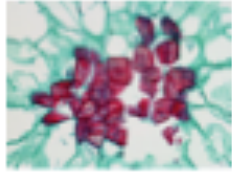
Datos



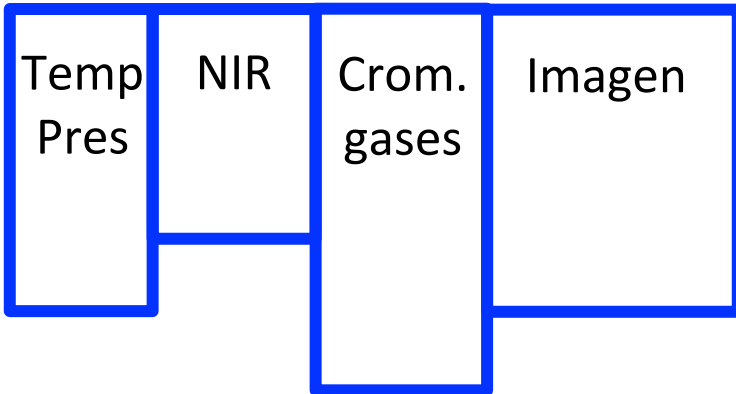
Modelo
predictivo



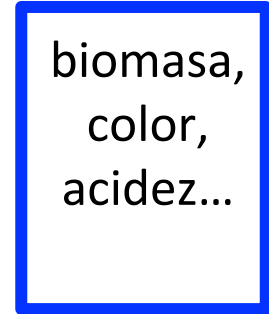
Metabolismo
y regulación



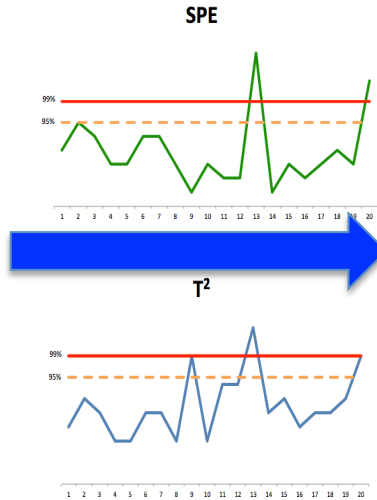
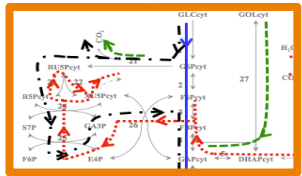
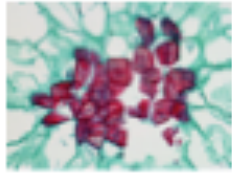
Datos



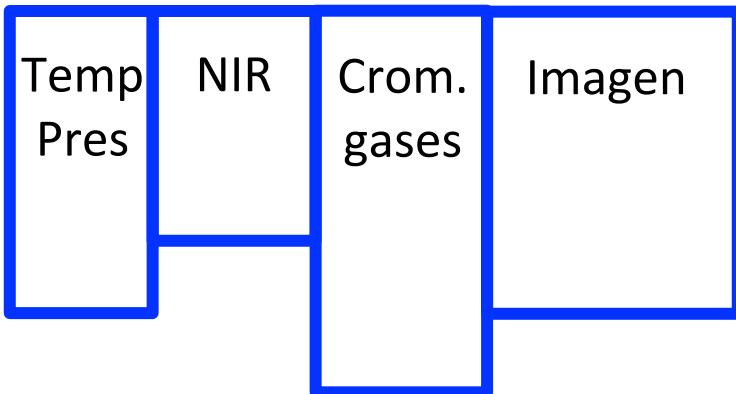
Modelo
predictivo



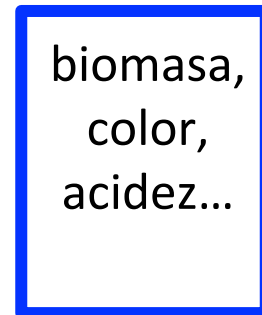
Metabolismo
y regulación



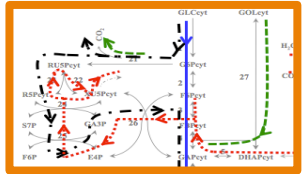
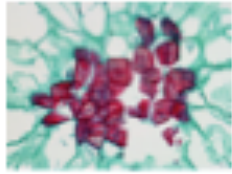
Datos



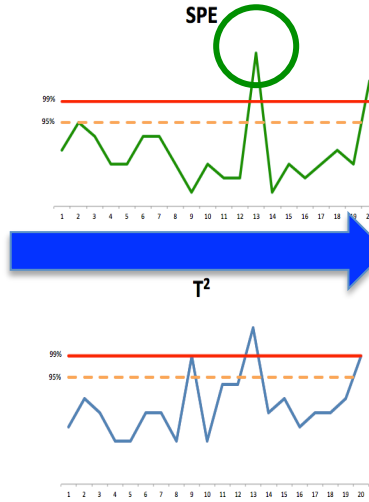
Modelo
predictivo



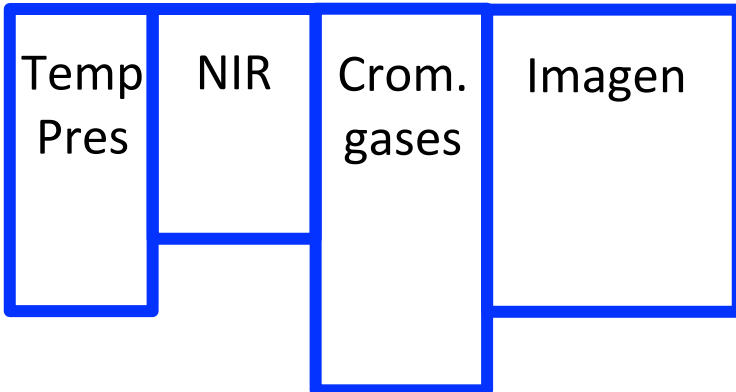
Metabolismo
y regulación



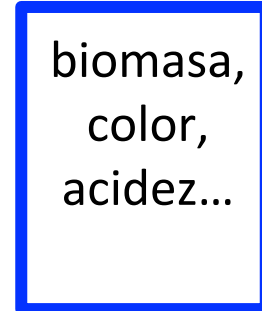
Diagnóstico de fallos



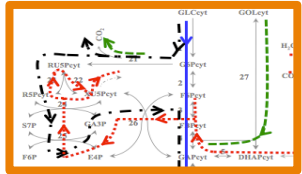
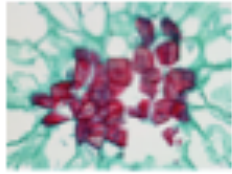
Datos



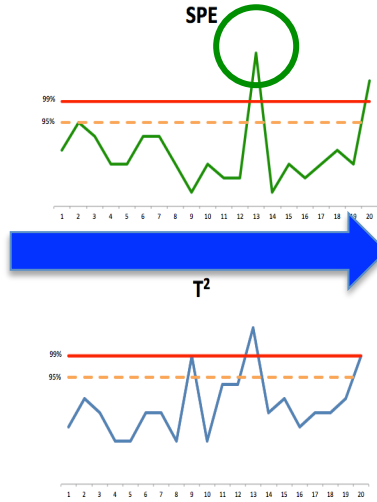
Modelo
predictivo



Metabolismo
y regulación



Diagnóstico de fallos



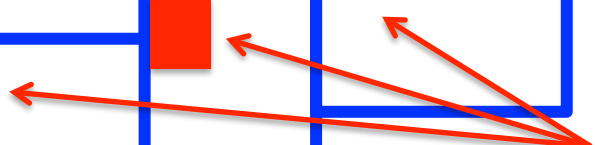
Datos

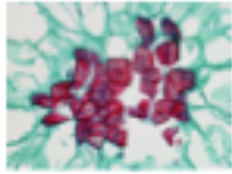
Temp	NIR	Crom. gases	Imagen
Pres			

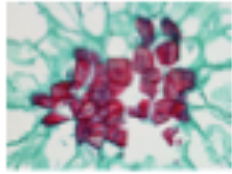
Modelo predictivo

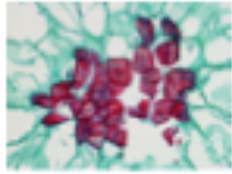
biomasa,
color,
acidez...

Datos Faltantes



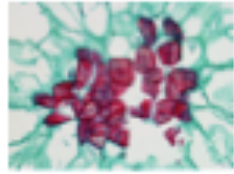






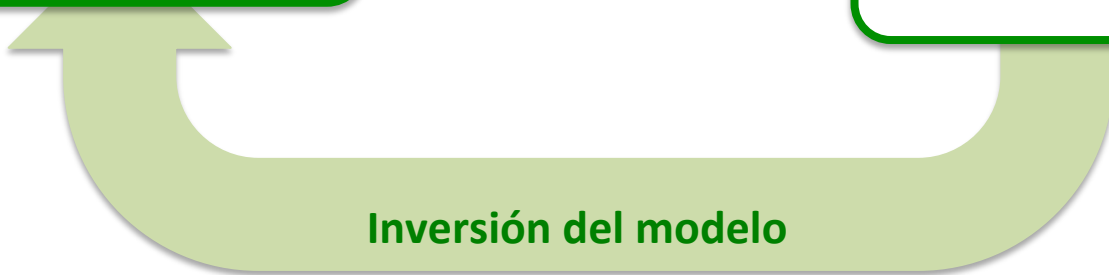
Calidad deseada

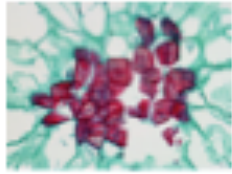
Inversión del modelo



**Condiciones
experimentales
adecuadas**

Calidad deseada

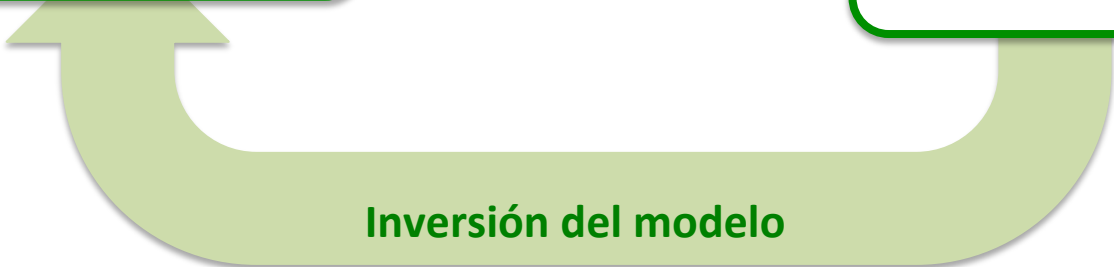




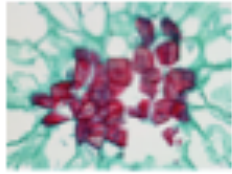
Mejor producto

**Condiciones
experimentales
adecuadas**

Calidad deseada



Inversión del modelo



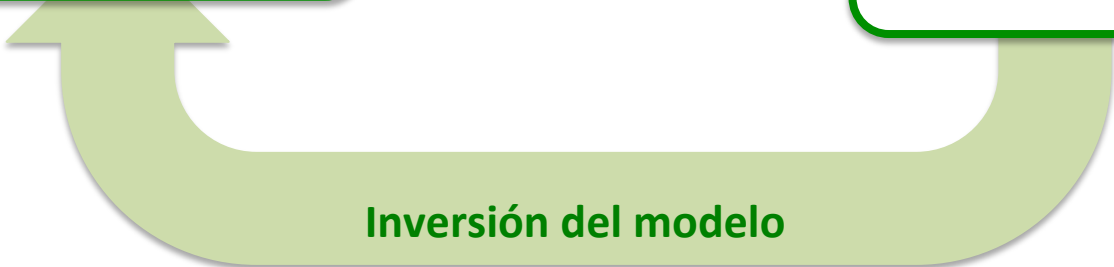
**Condiciones
experimentales
adecuadas**



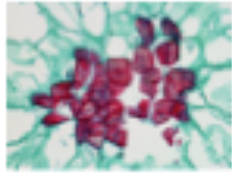
Mejor producto



Calidad deseada



Inversión del modelo



¡Gracias!

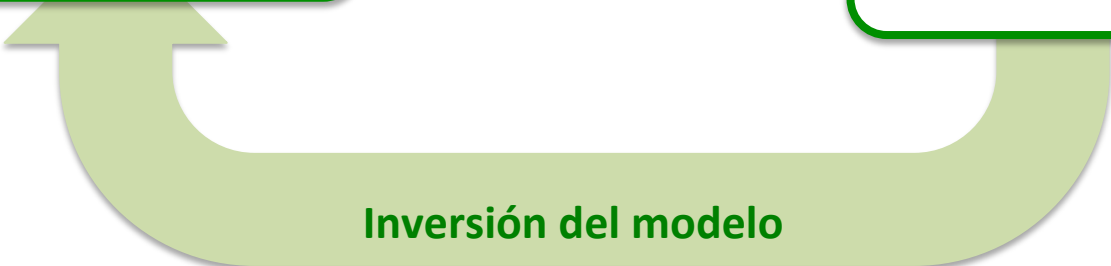


Mejor producto



Condiciones
experimentales
adecuadas

Calidad deseada



Inversión del modelo